

THE  
**BERKELEY  
SQUARE**  
ESTATE

FLAT 2, 26 HAYS MEWS  
MAYFAIR LONDON W1  
LET



A fabulous first floor two double bedroom apartment (812 sqft) in this brand new period development which is finished to a high specification and is tastefully furnished in an exciting modern style. The property benefits from a grand and elegant reception room, plentiful amounts of natural light, high ceilings and period features.



# FLAT 2, 26 HAYS MEWS

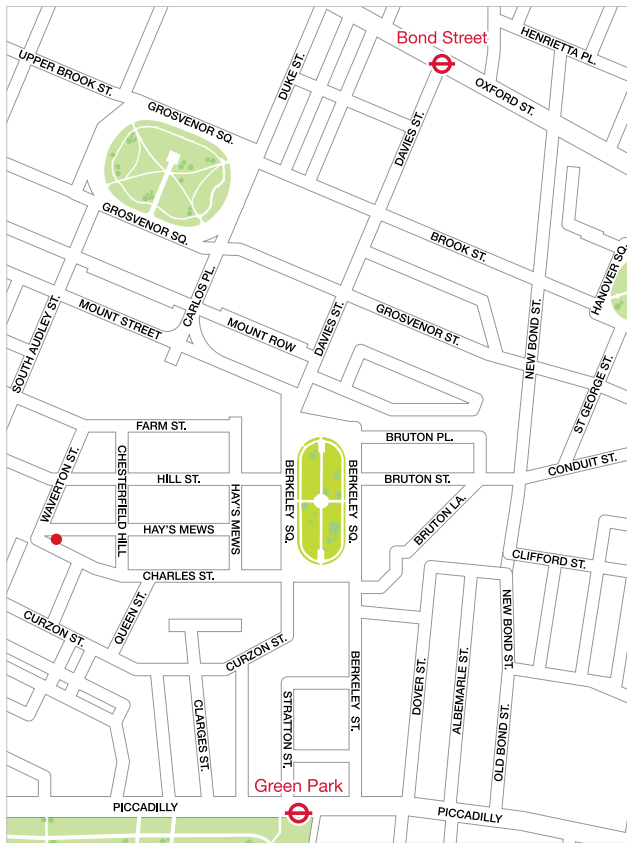
## MAYFAIR LONDON W1

### LET

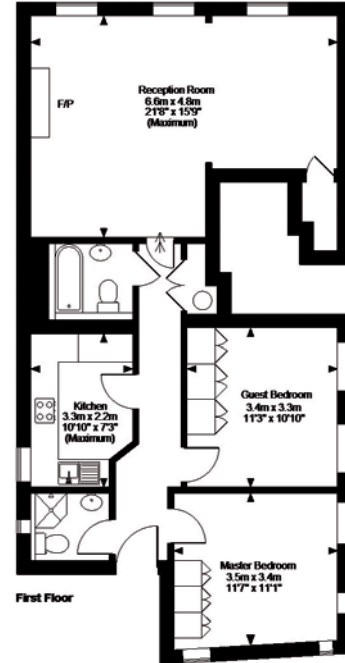
#### LOCATION

This unusual period building is conveniently located in the heart of Mayfair at the western end of Charles Street, in close proximity to the world renowned restaurants, boutiques and galleries of Mount Street and Bond Street as well as the open spaces of Hyde Park and Green Park.

The property benefits from being just off Berkeley Square and is in close walking distance of Green Park and Bond Street Underground Stations.



#### FLOOR PLAN



Floor plan not to scale. For indicative purposes only

#### RENT

Upon application.

Alastair Mercer

[enquiries@mercerpasqua.co.uk](mailto:enquiries@mercerpasqua.co.uk)

020 7665 6633



INDEPENDENT PROPERTY CONSULTANTS

We wish to advise prospective purchasers that these sale particulars are believed to be correct, but their accuracy is in no way guaranteed, nor do they form part of any contract. We have not carried out a detailed survey nor tested the services, appliances or specific fittings.

January 2013

taylorreid design +44 (0) 20 7355 2500